

SOKKIA

SHC6400

Ultra-Rugged Tablet

WEEE Recycling Passport

SOKKIA

SCH6400

Ultra-Rugged Tablet

WEEE Recycling Passport

Part Number 1069123-01 (JS 31302)

Revision A

© 2023 Topcon Corporation


Table of Contents

SHC6400 Ultra-Rugged Tablet	2-1
WEEE Recycling Passport	2-1
Product Identification and Selective Treatment Information	2-3
Primary Disassembly	2-4
Case Back Disassembly	2-5
Internal Disassembly	2-7
Cell Modem	2-7
Rear Camera Disassembly	2-8
ER Bluetooth Module Disassembly (if equipped)	2-9
Main PCBA Disassembly	2-10
Remove Flextails from Frame	2-11
Final Disassembly	2-12

SHC6400 Ultra-Rugged Tablet

WEEE Recycling Passport



<p>TITLE:</p> <p>SHC6400 WEEE Passport</p>	<p>REVISION DATE:</p>	 <p>1132 West 1700 North Logan, Utah 84321 435-753-1881</p>
<p>PART NUMBER:</p> <p>31302</p>	<p>REVISION:</p> <p>00</p>	
<p>COLOR CODE:</p> <p>N/A</p>	<p><u>Juniper Systems Internal</u> <u>Use Only</u></p> <p>PACKAGE NUMBER WHERE USED: XXXXX</p>	<p>RoHS COMPLIANCY REQUIRED</p> <p>The use of heavy metals and heavy metal compounds of lead (Pb), cadmium (Cd), mercury (Hg), hexavalent chromium (Cr VI) and flame retardant systems based on polybrominated biphenyls (PBB), and polybrominated diphenyl ethers (PBDE), including penta bromodiphenyl ethers, deca bromodiphenyl ethers (DBDE) and octa bromodiphenyl ethers is not allowed in the materials or processing of this part. Trace levels of heavy metals may be present as impurities, within threshold limits. (<0.1% for Pb, Hg, Cr VI, PBB & PBDE and <0.01% for Cd)</p>

REUSE AND TREATMENT INFORMATION				
Material				
Waste Disposal (WD)	Weight (lb.)	Weight [g]	Weight [%]	Important Information
Subtotal				
Recovery Operations (RO)				
Rubber/Elastomer	0.014	6.350288	0.97%	
Sealant Compound				
Wood				
Subtotal	0.014	6.350288	0.97%	
Recycling (RC)				
Aluminum Alloy cast				
Aluminum Alloy wrought				
Battery	0.64	290.29888	44.46%	
Cable				
Cable with plug	0.001	0.453592	0.07%	
Carton				
Copper	0.03	13.60776	2.08%	
Copper Alloy				
Gas				
Glass optical	0.291	131.995272	20.21%	
Iron				
Liquid				
Magnesium Alloy	0.126	57.152592	8.75%	
Magnetic material	0.014	6.350288	0.97%	
Metal nonferrous	0.03	13.60776	2.08%	
Paper				
Plastic	0.0756	34.2915552	5.25%	
Plug				
Printed circuit board (PCB)	0.131	59.420552	9.10%	
Sintered material				
Steel	0.016	7.257472	1.11%	
Steel stainless	0.071	32.205032	4.93%	
Textile material				
Subtotal	1.4256	646.6407552	99.03%	
Re-Use (RU)				
Subtotal				
			0.00%	
Total Weight	1.4396	652.9910432	100.00%	

Product Identification and Selective Treatment Information

<p>SHC6400 Geo and GEO Cell</p>	
<p>USA and International Units Serial Label</p>	
<p>Sokkia Battery Door Label</p>	
<p>Sokkia Case Back Label</p>	
<p>Sokkia Product Label</p>	

Primary Disassembly

1. Remove I/O Dust Cover.



2. Remove Case Back Label.



3. Remove battery door label.



4. Unhook and remove hand strap.



5. Remove stylus from garage and cut tether to remove.



6. Remove product label.



7. Remove bumper screws (eight places) with PH#0 and remove bumpers.



8. Remove hand strap brackets (Four places).

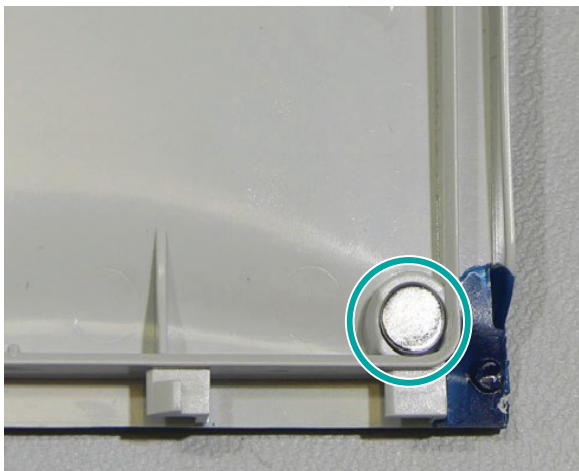


Case Back Disassembly

1. Remove hydrophobic patch.
2. Unlatch and remove battery door.



3. Remove rare earth magnet (Magnetic material).



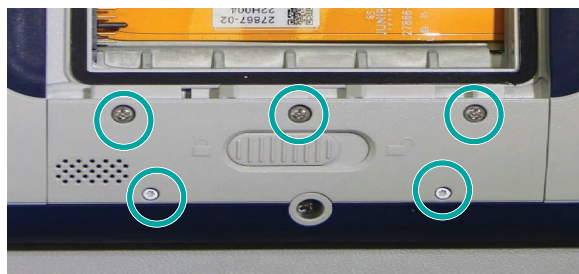
4. Remove battery pack (see separate WEEE Recycling Passport for the battery pack).



5. Remove battery compartment label.
6. Remove battery door gasket.



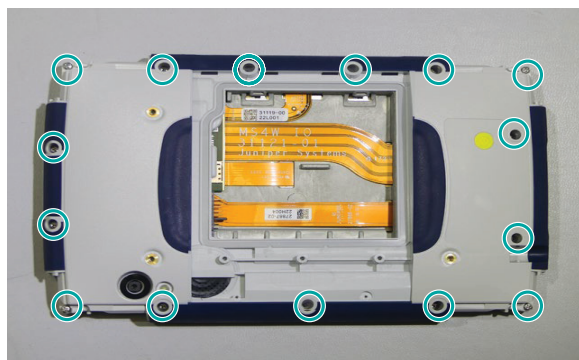
7. Remove five screws from battery latch faceplate.



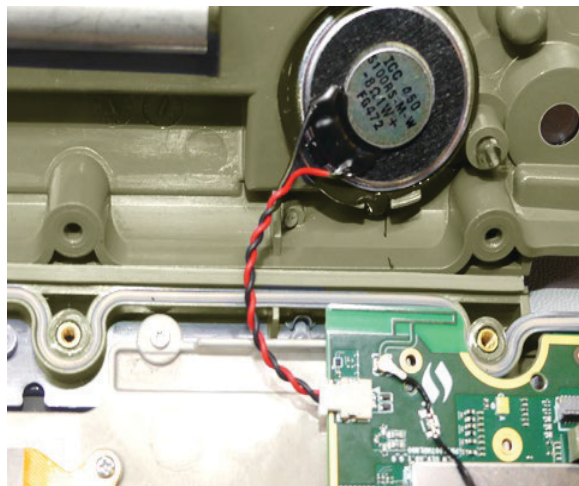
8. Remove battery latch and spring.



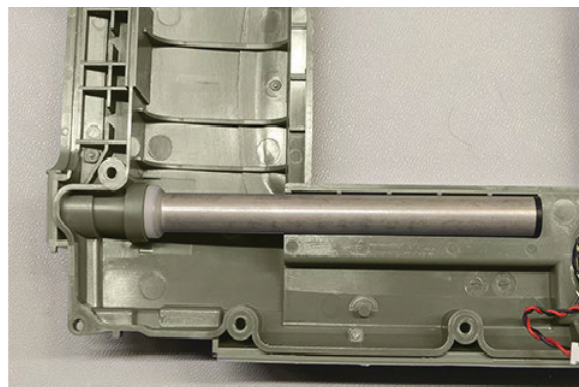
9. Remove 15 screws from perimeter of back side of the unit with PH#1 and remove case back.



10. Unplug speaker and remove from case back.



11. Remove stylus garage from case back.

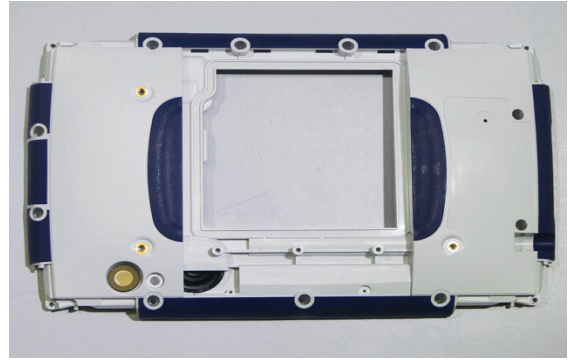


12. Remove plastic and rubber rings.

14. Remove three brass inserts.

13. Remove rubber stopper from end.

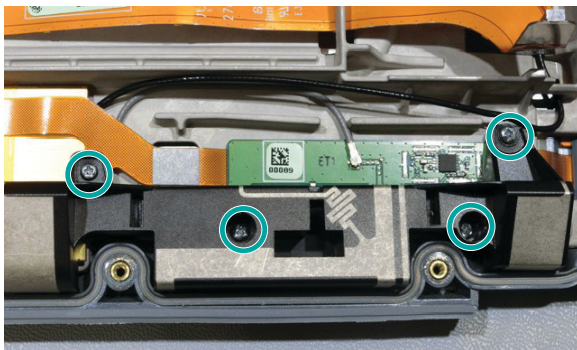
15. Remove camera lens and flashlight pipe.



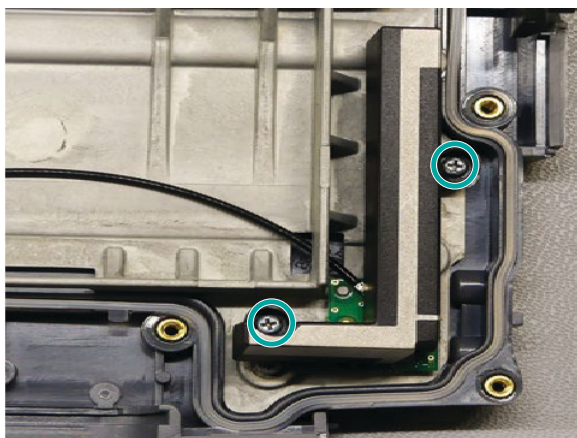
Internal Disassembly

Cell Modem

1. Remove four screws indicated from Main antenna with PH#1.
2. Remove antenna.



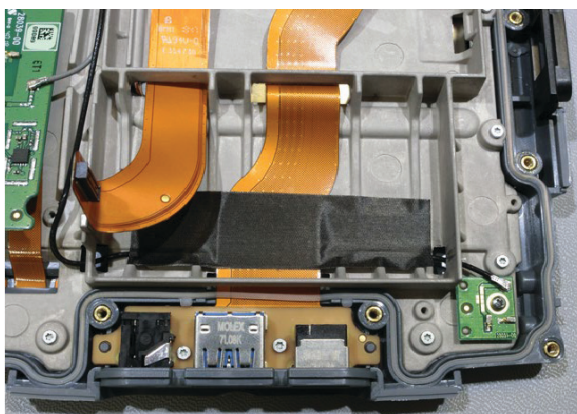
3. Remove two screws as shown with PH#1 and remove diversity antenna.



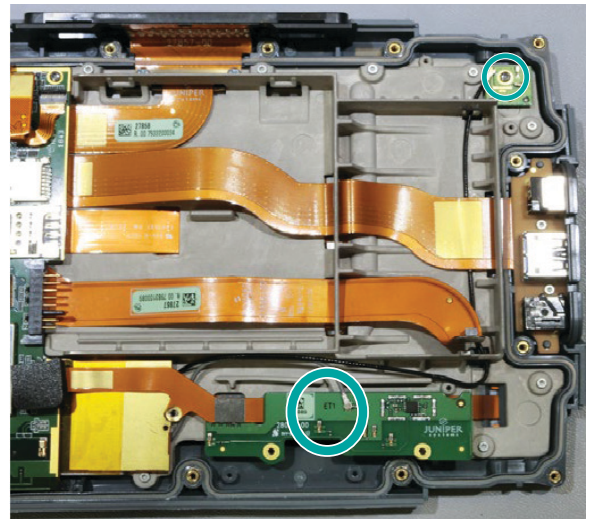
4. If installed, remove internal battery by detaching cable from battery and removing battery.



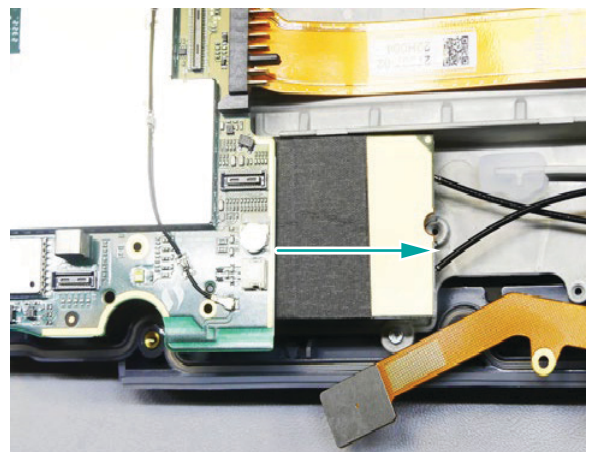
5. Remove RF tape.



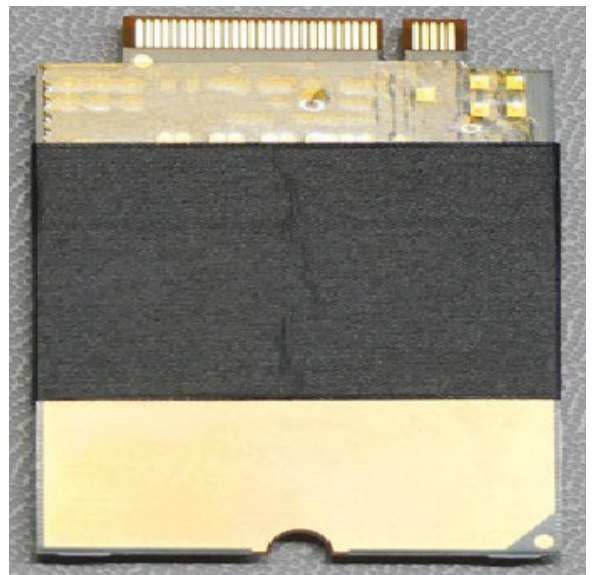
6. Remove screw from Diversity module with PH#1.
7. Remove main and diversity antenna PCBAs and unplug cables.



8. Remove cell module.

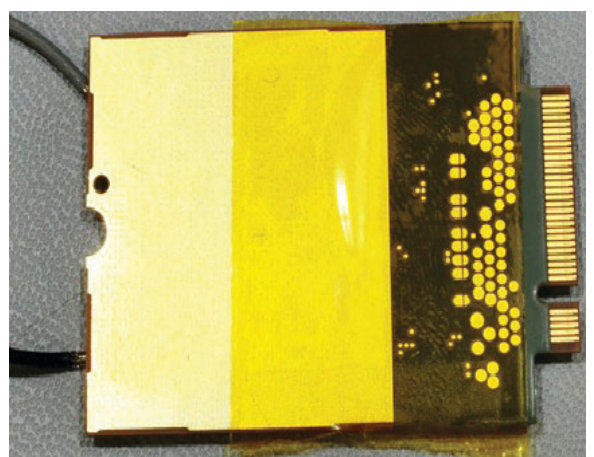


9. Remove RF tape from cell module.



10. Remove Kapton tape from module.

11. Remove cables from front of cell module.



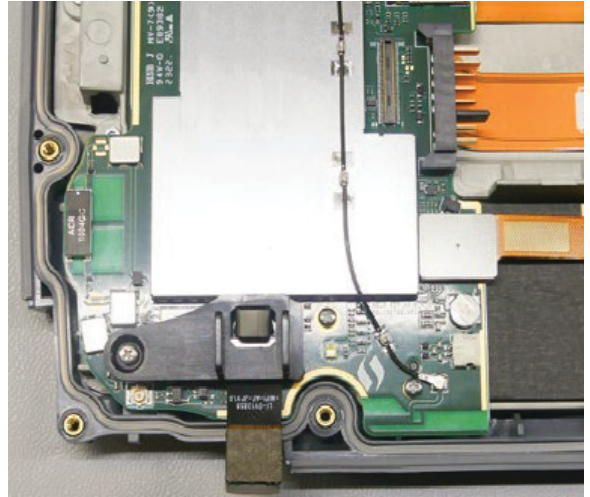
Rear Camera Disassembly

1. Remove camera boot.

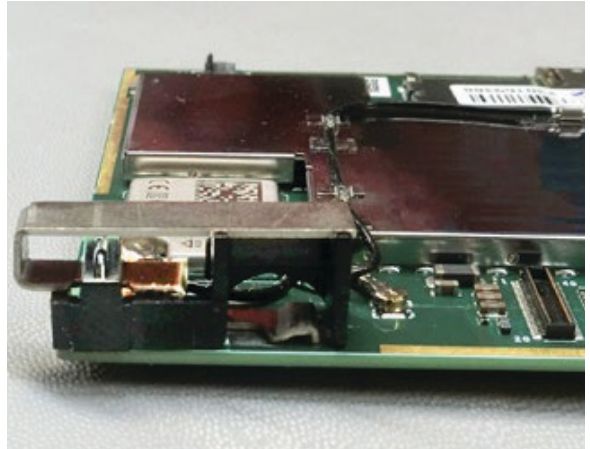


2. Peel rear camera from support and remove camera.

3. Remove rear camera support with PH#1.

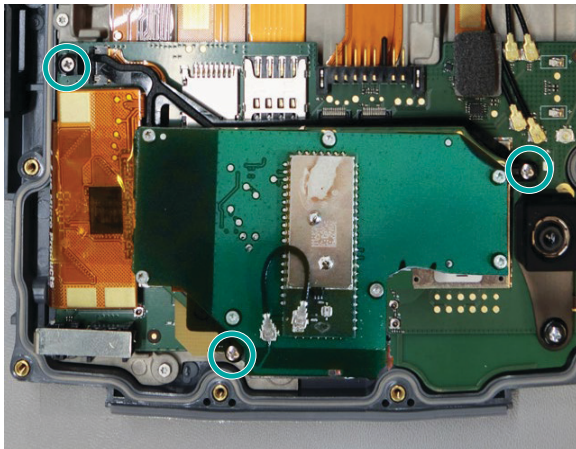


4. Remove antenna support.

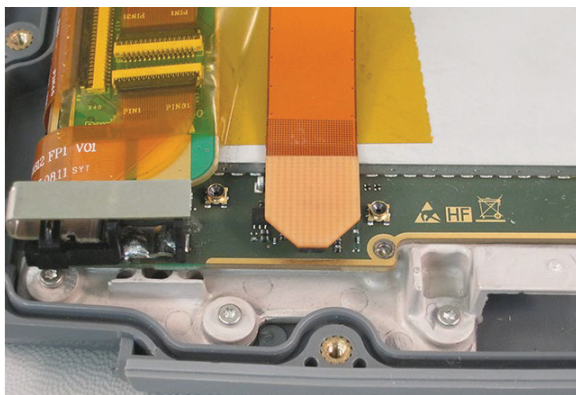


ER Bluetooth Module Disassembly (if equipped)

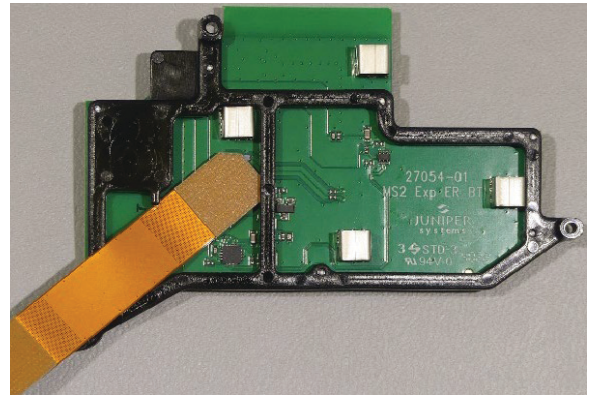
1. Remove these three screws with PH#1.



2. Unplug the flex connector from the main board.

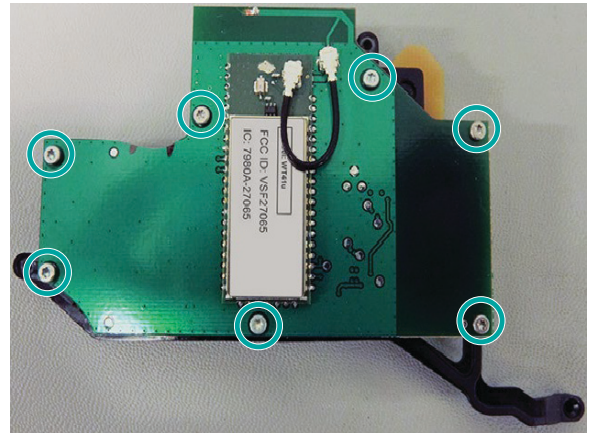


3. Remove flex from PCBA.



4. Remove the seven screws from around the PCBA with T5.

5. Separate the PCBA from the bracket.

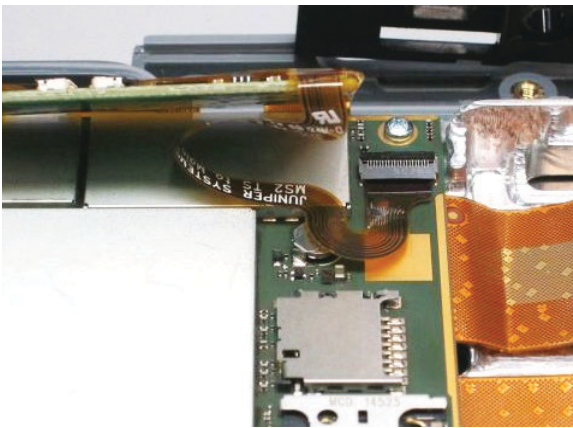


Main PCBA Disassembly

1. Remove Kapton tape from can.



2. Disconnect touch screen flex tail from connector.

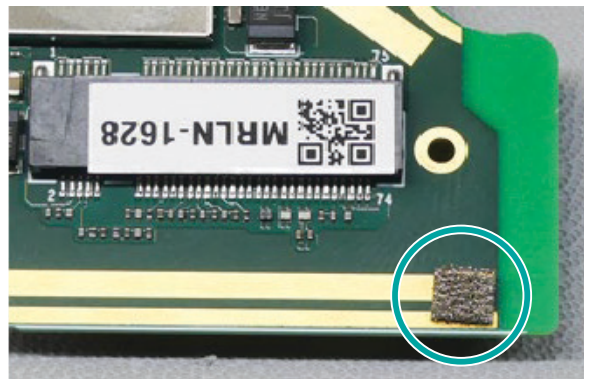


3. Remove five screws from main PCBA with PH#1.

NOTE: if an ER Bluetooth module has been removed, three of these screws will have been removed in the process.

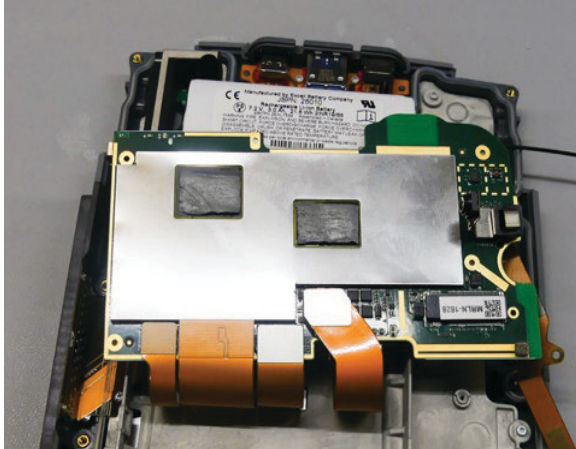


4. Remove ground pad from main PCBA.

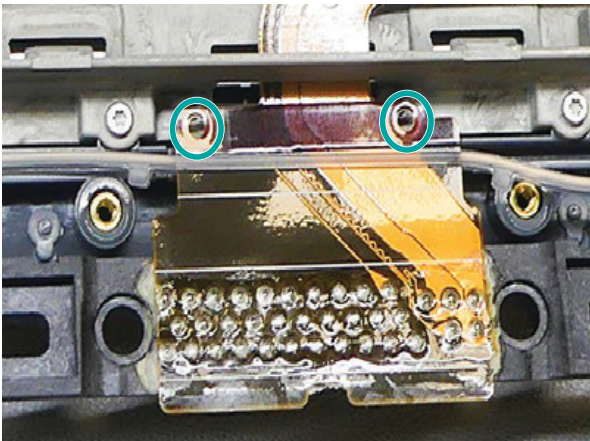


Remove Flextails from Frame

1. Remove front camera.
2. Remove thermal interface material.
3. Disconnect all flextails from PCBA.
4. Remove main PCBA.



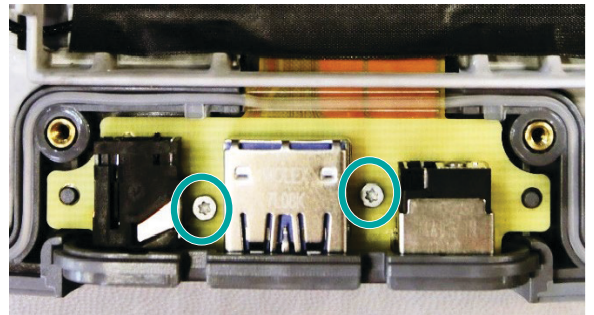
5. Remove two Philips screws from docking module.



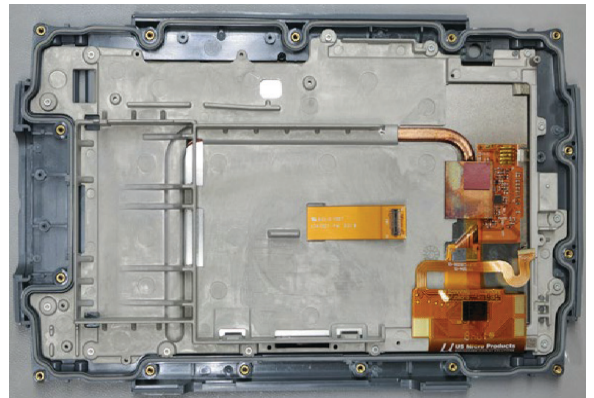
6. Remove docking module.



7. Remove two T5 screws from I/O module.
8. Remove I/O module faceplate and remove I/O module from unit.

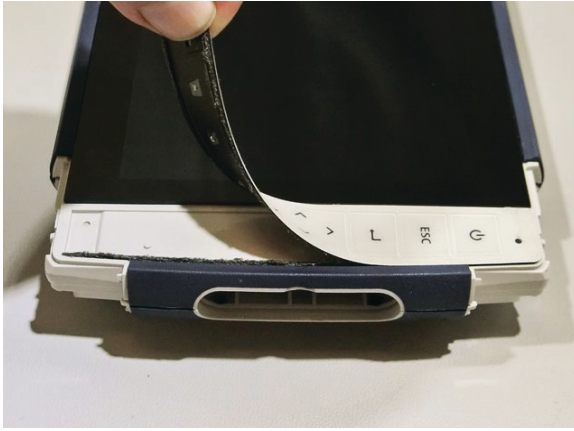


9. Remove main gasket.

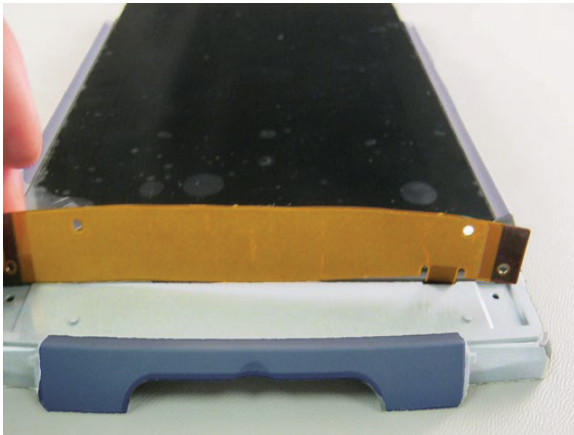


Final Disassembly

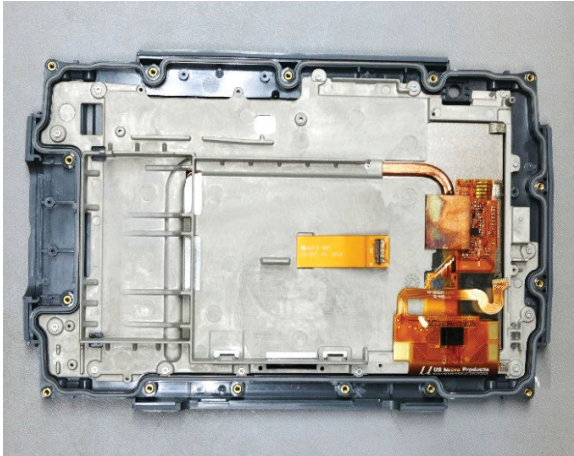
1. Pull keypad cover away from unit



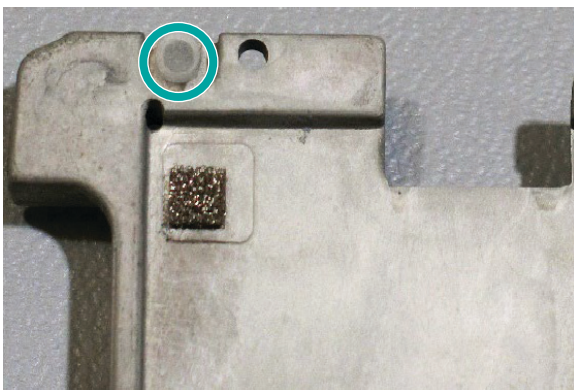
2. Pull keypad flex away from unit.
3. Remove flex tail from case front.



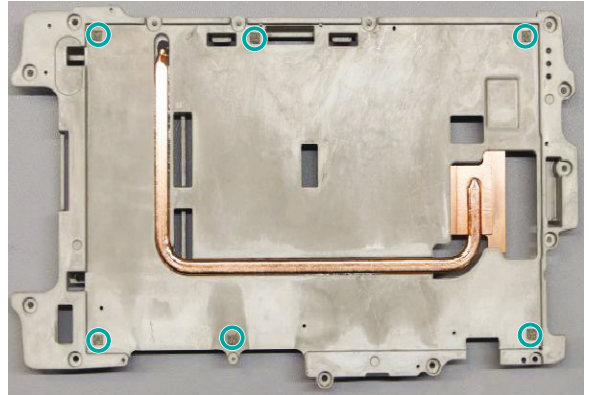
4. Remove screws from perimeter of frame with a T5 driver and remove frame.



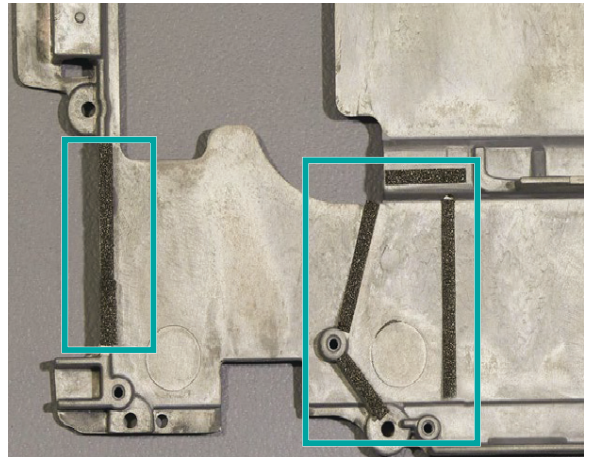
5. Remove light pipe from mag frame.



6. Remove heat pipe from mag frame.
7. Remove six grounding pads.



8. Remove ground tape strips from mag frame.



9. Remove display flex.

10. Remove display from case front.

11. Remove pressed-in hardware from case front.



SOKKIA



www.sokkia.com

Sokkia Corporation • 16900 W 118th Terrace • Olathe, KS 66061 • +1-800-4-SOKKIA
Topcon Europe Positioning B.V. Essebaan 11 2908 Lj Capelle a/d IJssel The Netherlands •
+31 (0)10-751 9300

© 2023 Topcon Corporation • 7400 National Drive • Livermore, CA • 94550 • All rights reserved.
Specifications subject to change without notice • 1069123-01 Revision A (JS 31302) • 11/2023